



---

SHORT COMMUNICATION

## ***Mezium americanum* (Laporte de Castelnau, 1840), a new synonym of *Mezium sulcatum* (Fabricius, 1781) (Coleoptera: Ptinidae, Gibbiinae, Meziini)**

**Jerzy Borowski<sup>a</sup> & Marek Sławski<sup>b</sup>**

Department of Forest Protection and Ecology, University of Life Sciences, SGGW,  
ul. Nowoursynowska 159/34, 02-776 Warsaw, Poland

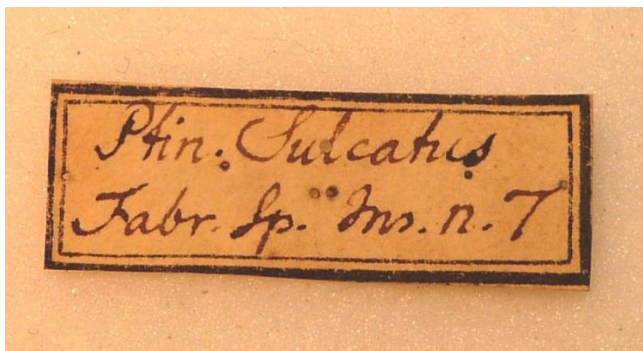
<sup>a,b</sup>E-mail address: [jerzy\\_borowski@sggw.pl](mailto:jerzy_borowski@sggw.pl) , [marek\\_slawski@sggw.pl](mailto:marek_slawski@sggw.pl)

### **ABSTRACT**

Synonymy of two species of the genus *Mezium* Curtis has been established: *M. sulcatum* (F.) proved taxonomically identical to *M. americanum* (Laporte). For *Mezium hirticolle* (Laporte) the status has changed.

**Keywords:** entomology, taxonomy, nomenclature, Coleoptera, Ptinidae, Gibbiinae, Meziini, new synonym, new status

After the revision of the two type specimens from the collection of J. Ch. Fabricius (Natural History Museum in London) (Figs 1-2) it was proven that *Ptinus sulcatus* Fabricius, 1781 is an older synonym of *Gibbium americanum* Laporte de Castelnau, 1840. In that case, *Mezium hirticolle* (Laporte) received a new status.



**Fig. 1.**



**Fig. 2.**

**Figs 1-2.** The type specimen of *Ptinus sulcatus* Fabricius, 1781;  
1 – the label under specimens; 2 – the shape of pronotum and the „collar” of elytra.

Below is given the list of synonyms of *Mezium sulcatum* (F.) and *M. hirticolle* (Laporte) with their geographical distribution and a shape of the bodies (Figs 3-4):

*Mezium sulcatum* (Fabricius, 1781), Fig. 3.

*Ptinus Sulcatus* Fabricius, 1781: 73

*Gibbium americanum* Castelnau de Laporte, 1840: 297 **syn. nov.**

*Gibbium nitidipenne* Germain, 1856: 395

*Mezium arachnoides* Desbrochers des Loges, 1875: 50



**Fig. 3.**

**Fig. 3.** A body of *Mezium sulcatum* (F.), dorsal view.

Geographical distribution: Palearctic element, probably originated in the Canary Islands. The species was introduced with dry plant materials or excrement of herbivores to various countries of the world.

***Mezium hirticolle*** (Castelnau de Laporte, 1840), Fig. 4., **stat. nov.**

*Gibbium hirticolle* Castelnau de Laporte, 1840: 297

*Mezium cristatum* Boheman, 1858: 86



**Fig. 4.**

**Fig. 4.** A body of *Mezium hirticolle* (Laporte), dorsal view.

Geographical distribution: Palearctic element, probably originated in the Canary Islands. The species was sporadically introduced with dry plant materials or excrement of herbivores to the continental part of Europe and South America.

#### **Acknowledgements**

The first author (JB) would like to thank Dr. S. L. Shute and Dr. M. Barclay for the possibility and support in my study of Bostrichoidea, which are housed in the Natural History Museum in London.

## **References**

- [1] Boheman C. H. 1858. Kongliga Swenska Fregatten Eugenie Resa omkring Jorden under befäl of C. A. Virgin Åren 1851-53. Coleoptera. Species novas descripsit. Norstedt, Stockholm, 217 pp., 2 pls.
- [2] Desbrochers des Loges M. J. 1875. Ptinides nouveaux. Opuscules Entomologiques (Coléoptères). 1 (1874-1975): 49-51.
- [3] Fabricius J. Ch. 1781. Species Insectorum Exhibentes eorum Differentias Specificas, Synonyma Auctorum, Loca Natalia, Maetamorphosin adiectis Observationibus. 1 Hafniae, 348 pp.
- [4] Germain P. 1856. Descripción de coléopteros de diversas especies que no se hallan en la obra del señor Gay. Annales de la Universidad de Chile, 1855: 386-407.
- [5] Laporte de Castelnau F. L. N. Caumont de. 1840. Histoire naturelle des insectes coléoptères. Avec une introduction renfermant l'anatomie et la physiologie des animaux articulés par M. Brullé. Tome Premier. Paris: P. Duménil, i-cxxiv + 24 pls +324 +[1] pp., 19 pls.

( Received 28 December 2016; accepted 11 January 2017 )