



---

Short communication

## A new name for *Clubiona serrata* Dhali, Roy, Saha et Raychaudhuri, 2016 (Araneae: Clubionidae)

Dhruba Chandra Dhali<sup>1</sup>, Tapan Kumar Roy<sup>1</sup>, Sumana Saha<sup>2</sup>,  
Dinendra Raychaudhuri<sup>1,\*</sup>

<sup>1</sup>Department of Agricultural Biotechnology, IRDM Faculty Centre, Ramakrishna Mission Vivekananda University, Narendrapur, Kolkata - 700103, India

<sup>2</sup>Department of Zoology, Darjeeling Govt. College, Darjeeling, Govt. of West Bengal, India

\*Email address: [dinendrarccu@gmail.com](mailto:dinendrarccu@gmail.com)

### ABSTRACT

New name *Clubiona hexadentata* nom. nov. is proposed in place of the sac spider species *C. serrata* Dhali *et al.*

**Keywords:** Sac spider; Clubionidae; *Clubiona hexadentata* nom.nov.; *C. serrata*

On 27<sup>th</sup> Sept., 2016, Dr. Theo Blick of World Spider Catalog community through mail pointed out that the clubionid spider *Clubiona serrata* Dhali, Roy Saha and Raychaudhuri, 2016 described by us is a junior synonym of *C. serrata* Zhang described from China (Zhang, 1992).

Relying on the number of cheliceral teeth, we therefore propose a new name *Clubiona hexadentata* for *C. serrata* Dhali *et al.*

*Clubiona hexadentata* nom. nov.

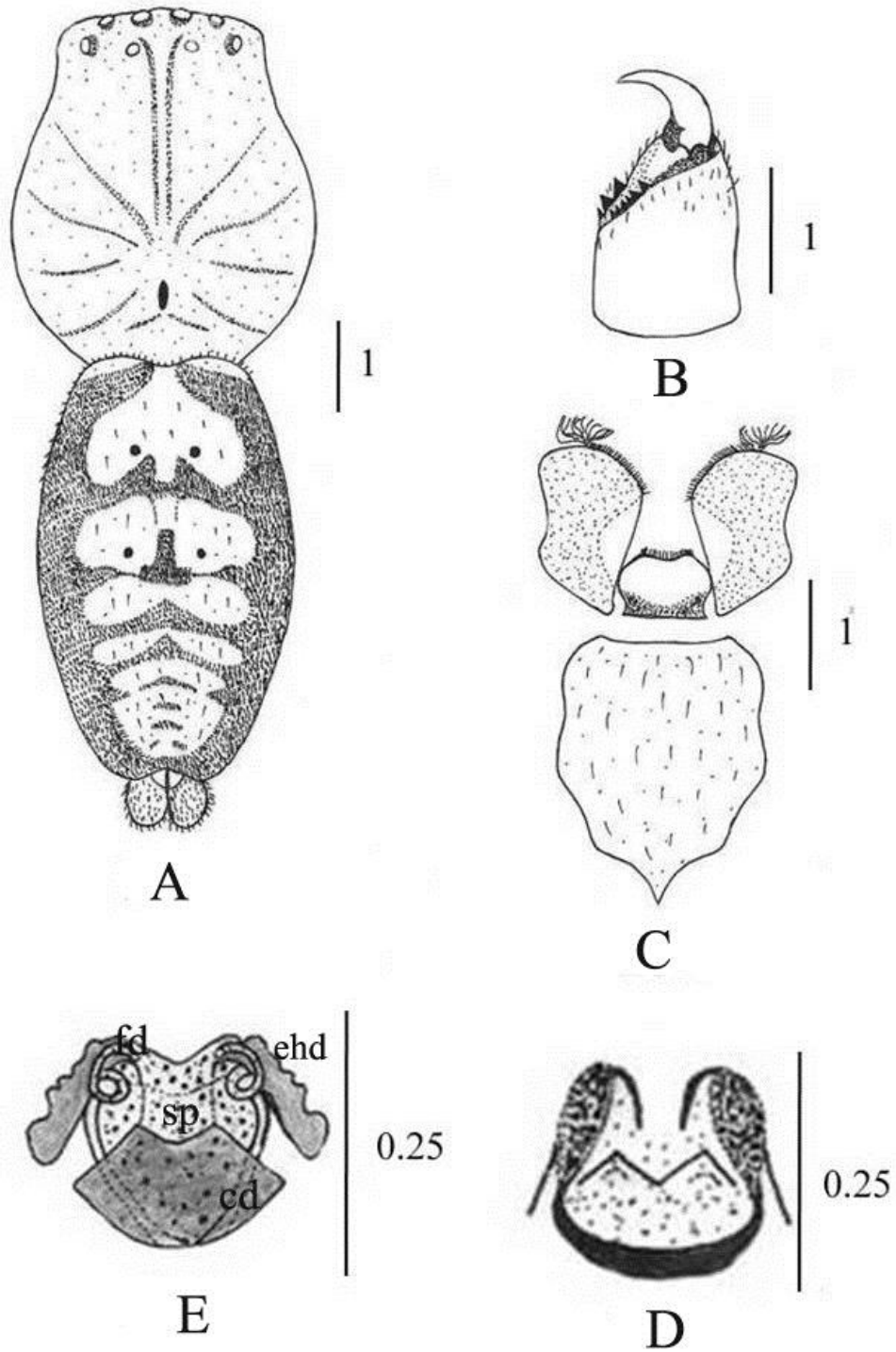
*Clubiona serrata*, Dhali, Roy, Saha et Raychaudhuri, 2016, *World Scientific News*, 50: p. 291-294, figs. 9 &10 [holotype: female from BTR, Jalpaiguri, West Bengal, India, 16.v.2009; paratype: female from Malangi, JWLS, Jalpaiguri, West Bengal, India, 23.iii.2010] (Nec *Clubiona serrata* Zhang, 1992, p. 51-52, figs. 9-12)

**References**

- [1] Dhali D. C., Roy T. K., Saha S. and Raychaudhuri D. 2016. On the new sac spiders (Araneae: Clubionidae) of Dooars, West Bengal, India. *World Scientific News*, 50, 278-305.
- [2] Zhang G. R. 1992. Six new species of the Genus *Clubiona* (Araneae: Clubionidae) from China. *Korean Arachnology*, 8(1-2), 47-65.

( Received 03 October 2016; accepted 16 October 2016 )

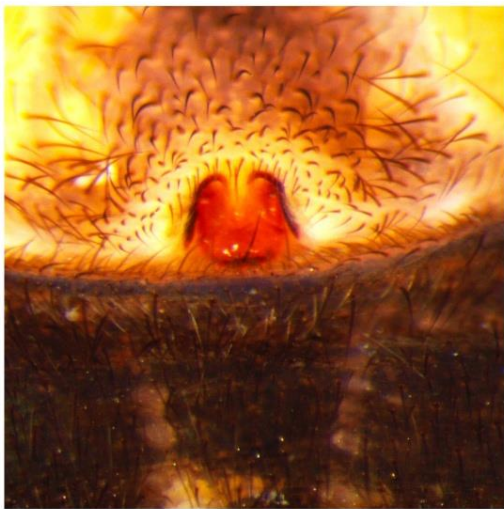
Clubiona hexadenta: Line drawings & photos: see pg 2 & 3



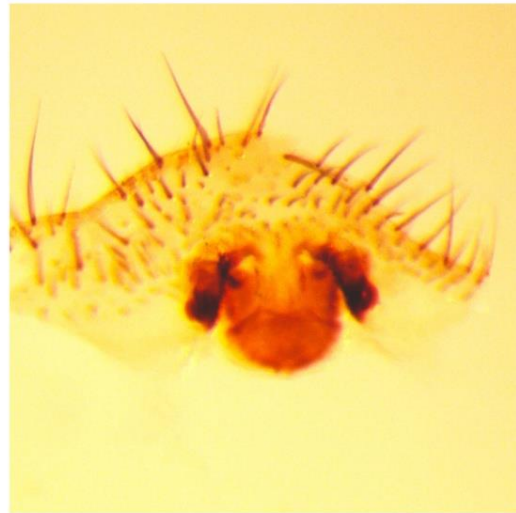
**Figure:** *Clubiona hexadentatata* nom. nov. female A- Cephalothorax and abdomen, dorsal view. B- Chelicerae, ventral view. C- Maxillae, labium and mandible, ventral view. D- Epigynum. E- Internal genitalia.



A



B



C

**Figure:** *Clubiona hexadentata* nom. nov. female A-Dorsal habitus. B- Epigynum. C- Internal genitalia.